

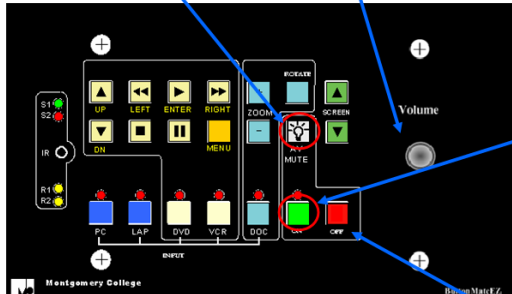
SIWS USE Quick Reference

A detailed PDF version of this help document is available on the computer desktop

SIWS Power On Sequence

AV Mute
- Temporarily black out screen

Volume Control
- Turn knob to adjust volume



POWER ON

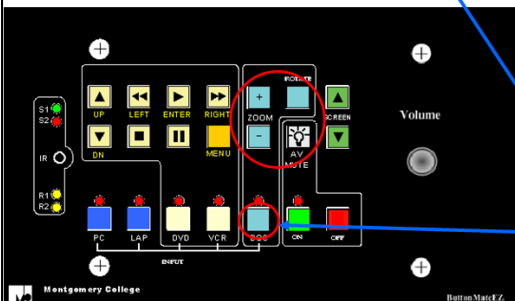
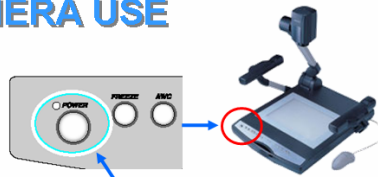
1 – Press **GREEN** “ON” (red LEDs will begin flashing and all panel functions will lock out for 30 seconds until projector warms up). PC input will automatically be selected.

POWER OFF

2- Press **RED** “OFF” button

NEED HELP Dial 7222

DOCUMENT CAMERA USE



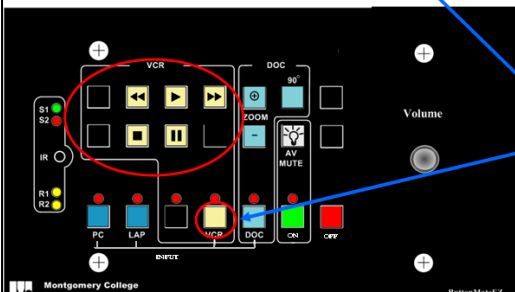
Power On Sequence

1 – Turn on the main power switch of the document camera. Power light will turn from red to green.

2- Select “DOC”

3- Use Zoom and rotate functions as required

VCR USE



1 – Press “Power” on VCR

2- Select “VCR”

3- Use VCR functions as required

Caption Decoder USE



Caption Decoder



1 -Caption decoder is located in rack next to VCR

2- Select "VCR"

3- Press grey button to activate caption decoder.

