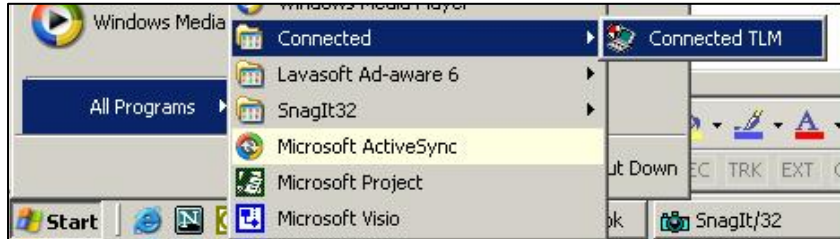


Changing Your Connected Password

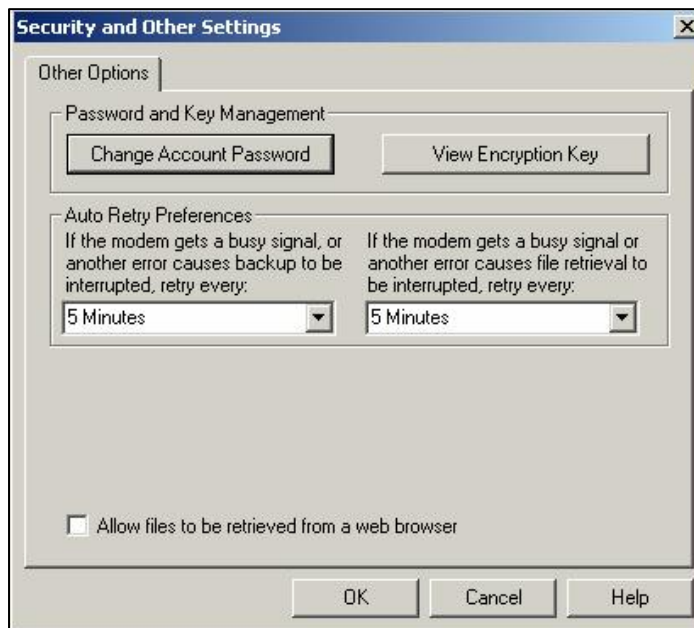
1. Open Connected by clicking **Start, Programs, Connected, Connected TLM**.



2. Along the top title bar, select **Options**, then **Security**.



3. In the Security and Other Settings window, click the **Change Account Password** button.



4. Enter in your **current (old)** password and then **enter and confirm your new** password. Once you have entered that information, click **OK**.



Set Account Password [X]

Please enter a password to protect your backup account against unauthorized access.

The password you specify should be at least 6 characters long. Case is not important.

If you no longer want to have an Account Password, leave the new Account Password fields blank.

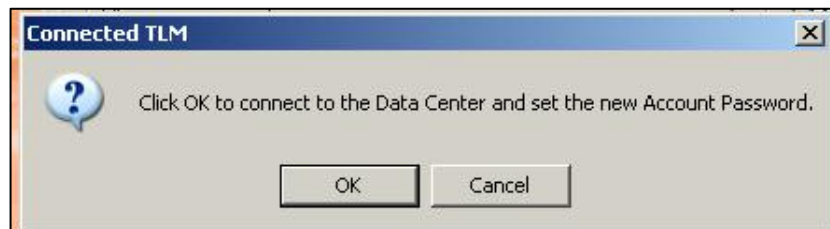
Please enter your current (old) Account Password:

New Account Password:


Confirm new Account Password:

OK Cancel Help

5. You should see the following message confirming the change of your Connected password. Click **OK** and Connected will update your account information.



Connected TLM [X]

 Click OK to connect to the Data Center and set the new Account Password.

OK Cancel